

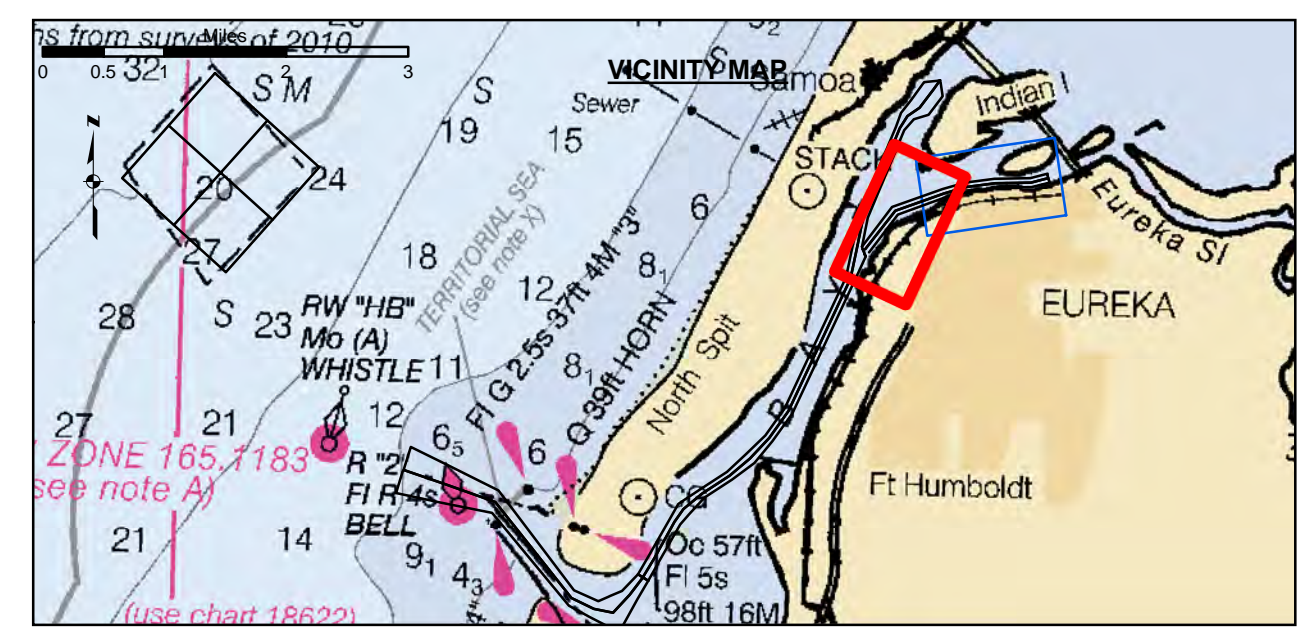
**US Army Corps of Engineers**  
 San Francisco District  
 450 Golden Gate Ave  
 San Francisco, CA 94102

**DISCLAIMER**  
 The United States Government furnishes this information for your information only. It is not intended to be used for any purpose other than that for which it was prepared. The user is responsible for the results of any application of the data for other than its intended purpose. The user is responsible for the results of any application of the data for other than its intended purpose. The user is responsible for the results of any application of the data for other than its intended purpose.

Chart Date:	Jan 22, 2020
Designed by:	PDT
Plotted by:	PDT
Checked by:	PDT
Drawn by:	PDT

**HUMBOLDT COUNTY**  
**HUMBOLDT BAY**  
**EUREKA CHANNEL**  
**CONDITION SURVEY**  
 10-13 JANUARY 2020

Angle Point	Easting	Northing
01E	5956172.98	2181852.13
02E	5957495.79	2183569.43
03E	5959682.09	2184360.53
04E	5960648.49	2184617.53
05E	5961936.19	2184796.03
06E	5963483.19	2184829.53
07E	5964225.19	2185019.53
08E	5964324.49	2184632.13
09E	5963537.79	2184430.63
10E	5961968.09	2184396.63
11E	5960727.59	2184224.73
12E	5959501.69	2183978.43
13E	5957741.49	2183232.93
14E	5956489.79	2181608.03
E1	5956331.39	2181730.13
E2	5957618.69	2183401.23
E3	5959741.89	2184169.53
E4	5960588.09	2184421.13
E5	5961952.09	2184596.33
E6	5963510.49	2184630.03
E7	5964274.85	2184825.82



Federal Navigation Channel	Beacon, General	<b>Contours</b>
Shoaling Area	Obstruction Point	-26
Placement Area	Navigation Buoy	-25
Anchorage Area	Navigation Buoy	-24
Wreck Area	Shoalest Sounding*	-23
Submerged Wreck		-22
Angle Point		

**NOTES:**  
 DRAWINGS NOT TO BE USED AS NAVIGATION. ONLY CHANNEL CONDITION AT DATE OF SURVEY. THE LOCATION OF ALL NAVIGATION AIDS ARE BASED ON INFORMATION PROVIDED BY THE U.S. COAST GUARD. BUOY LOCATION REPRESENT THE POSITION OF THE SINKER ONLY.

SURVEYED BY THE CORPS OF ENGINEERS.

SOUNDINGS WERE TAKEN BY FATHOMETER AND ARE SHOWN TO THE NEAREST TENTHS OF A FOOT.

SOUNDINGS ARE BASED ON THE DATUM OF MEAN LOWER LOW WATER AT THE LOCALITY.

PLANE GRID AND COORDINATES ARE BASED ON THE STATE OF CALIFORNIA COORDINATE SYSTEM, LAMBERT CONFORMAL PROJECTION, ZONE I NAD 83, CALIFORNIA, AS DESCRIBED IN SPECIAL PUBLICATION NO. 235, PUBLISHED BY THE NATIONAL OCEAN SURVEY.

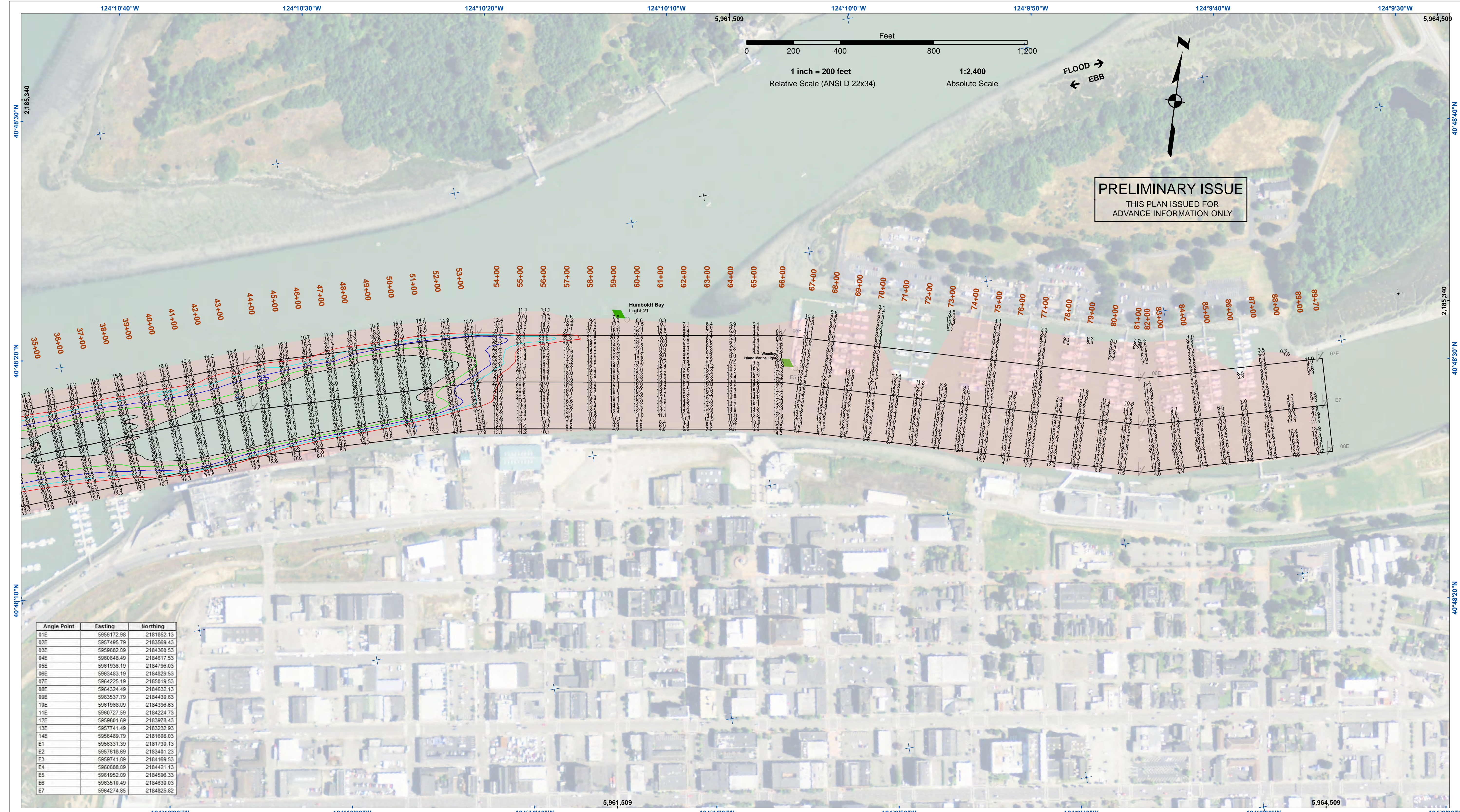
PROJECT DEPTHS ARE AS FOLLOWS:  
 BAR & ENTRANCE CHANNEL - 48 FEET  
 NORTH BAY, SAMOA TO MILE 5.0 & = 38 FEET  
 EUREKA CHANNEL, FIELDS LANDING CHANNEL & MILE 5.0 TO "N" STREET = 26 FEET

1:00 INDICATES THE NUMBER AND BEGINNING OF A LINE OF SOUNDINGS.

SOUNDINGS ARE BASED ON TIDE GAUGES REFERENCED TO U.S.C. & G.S. BENCH MARKS AS FOLLOWS:  
 EUREKA & SOMOA CHANNELS - B.M. NO. 4 (1906) ELEV. 33.61' M.L.L.W.  
 ENTRANCE & NORTH BAY CHANNELS - B.M. NO. 9 (1937) ELEV. 16.35' M.L.L.W.  
 FIELDS LANDING CHANNEL - B.M. NO. 5 (1925) ELEV. 8.52' M.L.L.W.

**Sheet Reference Number**  
 1 of 2



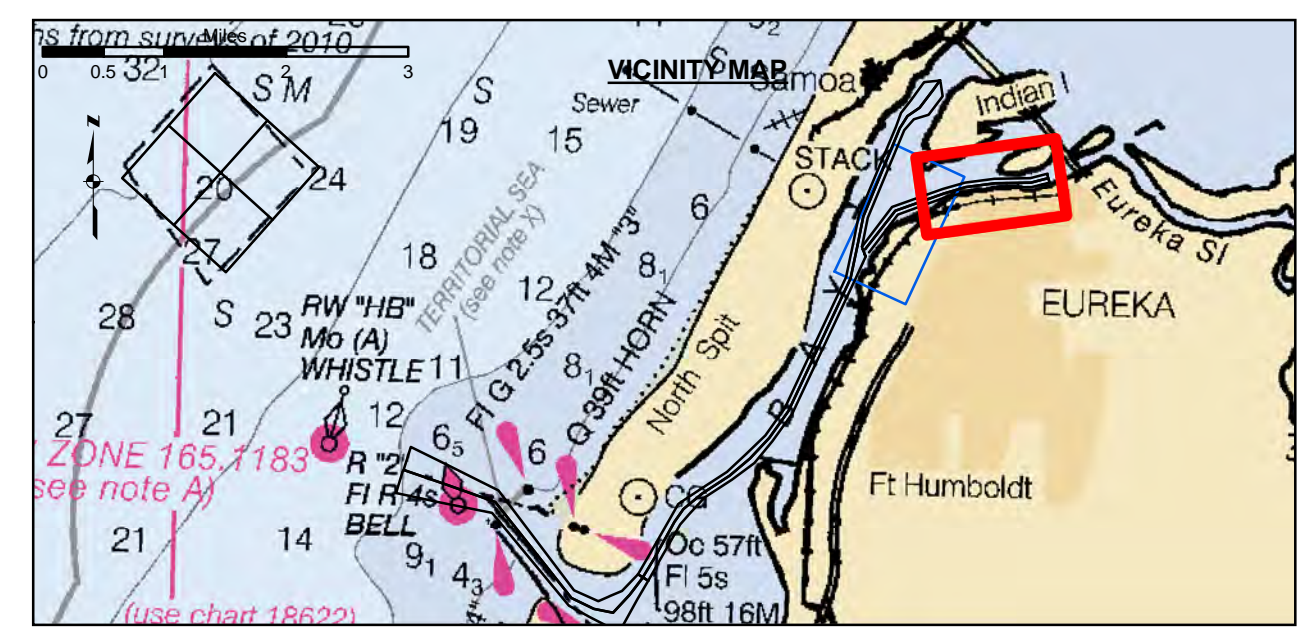


**US Army Corps of Engineers**  
 San Francisco District  
 450 Golden Gate Ave  
 San Francisco, CA 94102

**DISCLAIMER**  
 Distribution Liability: The data represents the results of data...  
 Access Constraints: The United States Government...  
 The user is responsible for the results of any application of the data for other than its intended purpose.

Angle Point	Easting	Northing
01E	5956172.98	2181852.13
02E	5957495.79	2183569.43
03E	5959682.09	2184360.53
04E	5960648.49	2184617.53
05E	5961936.19	2184796.03
06E	5963483.19	2184829.53
07E	5964225.19	2185019.53
08E	5964324.49	2184632.13
09E	5963537.79	2184430.63
10E	5961968.09	2184396.63
11E	5960727.59	2184224.73
12E	5959501.69	2183978.43
13E	5957741.49	2183232.93
14E	5956489.79	2181608.03
E1	5956331.39	2181730.13
E2	5957618.69	2183401.23
E3	5959741.89	2184169.53
E4	5960588.09	2184421.13
E5	5961952.09	2184596.33
E6	5963510.49	2184630.03
E7	5964274.85	2184825.82

Chart Date:	Jan 22, 2020
Surveyed By:	LT COLONEL C.E. CUNNINGHAM
Plotted By:	PDT
Designed By:	PDT
Checked By:	PDT
Drawn by:	PDT



Federal Navigation Channel	Beacon, General	<b>Contours</b>
Shoaling Area	Obstruction Point	-26
Placement Area	Navigation Buoy	-25
Anchorage Area	Navigation Buoy	-24
Wreck Area	Shoalest Sounding*	-23
Submerged Wreck		-22
Angle Point		

**NOTES:**  
 DRAWINGS NOT TO BE USED AS NAVIGATION. ONLY CHANNEL CONDITION AT DATE OF SURVEY. THE LOCATION OF ALL NAVIGATION AIDS ARE BASED ON INFORMATION PROVIDED BY THE U.S. COAST GUARD. BUOY LOCATION REPRESENT THE POSITION OF THE SINKER ONLY.  
 SURVEYED BY THE CORPS OF ENGINEERS.  
 SOUNDINGS WERE TAKEN BY FATHOMETER AND ARE SHOWN TO THE NEAREST TENTHS OF A FOOT.  
 SOUNDINGS ARE BASED ON THE DATUM OF MEAN LOWER LOW WATER AT THE LOCALITY.  
 PLANE GRID AND COORDINATES ARE BASED ON THE STATE OF CALIFORNIA COORDINATE SYSTEM, LAMBERT CONFORMAL PROJECTION, ZONE I NAD 83, CALIFORNIA, AS DESCRIBED IN SPECIAL PUBLICATION NO. 235, PUBLISHED BY THE NATIONAL OCEAN SURVEY.

PROJECT DEPTHS ARE AS FOLLOWS:  
 BAR & ENTRANCE CHANNEL - 48 FEET  
 NORTH BAY, SAMOA TO MILE 5.0 & = 38 FEET  
 EUREKA CHANNEL, FIELDS LANDING CHANNEL & MILE 5.0 TO "N" STREET = 26 FEET

1:00 INDICATES THE NUMBER AND BEGINNING OF A LINE OF SOUNDINGS.  
 SOUNDINGS ARE BASED ON TIDE GAUGES REFERENCED TO U.S.C. & G.S. BENCH MARKS AS FOLLOWS:  
 EUREKA & SOMOA CHANNELS - B.M. NO. 4 (1906) ELEV. 33.61' M.L.L.W.  
 ENTRANCE & NORTH BAY CHANNELS - B.M. NO. 9 (1837) ELEV. 16.35' M.L.L.W.  
 FIELDS LANDING CHANNEL - B.M. NO. 5 (1925) ELEV. 6.52' M.L.L.W.

CALIFORNIA  
 HUMBOLDT COUNTY  
**HUMBOLDT BAY  
 EUREKA CHANNEL  
 CONDITION SURVEY**  
 10-13 JANUARY 2020

**Sheet Reference  
 Number  
 2 of 2**